

*In Gaul, where
châteaux, baguettes
and battlefields
coexist and rise like
incense above the
altar of history,
artists have always
roamed freely...
inhaling deeply.*

F R A N C E

through the paintbrush of Michael Killelea



The Arc de Triomphe in Paris is the centerpiece of a spinning vehicular carousel.



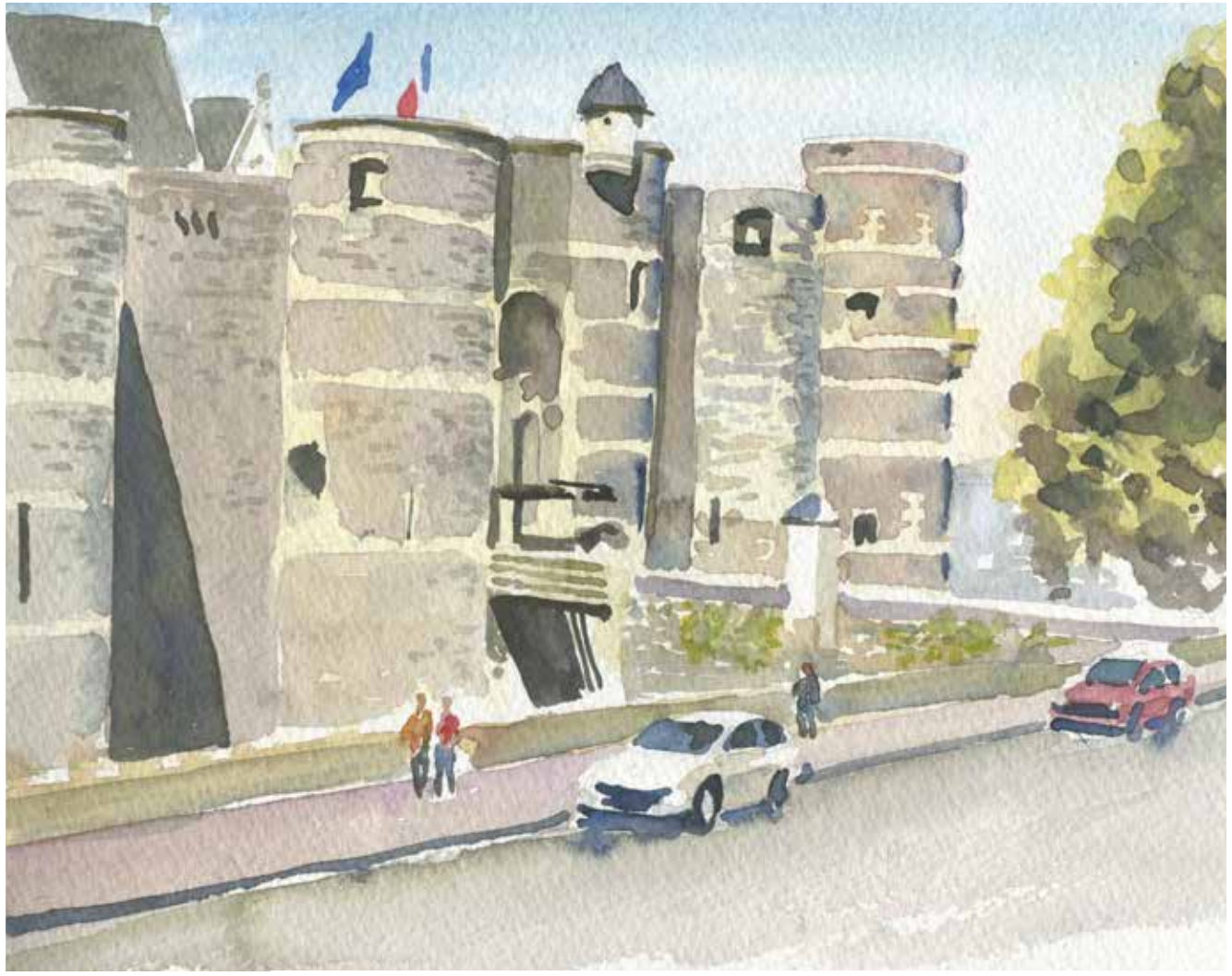
VERSAILLES

The palace outside Paris remains an example of the royal excess that sparked the French Revolution in 1789. It is a massive collection of gardens and opulent architecture.

ROCHECOTTE

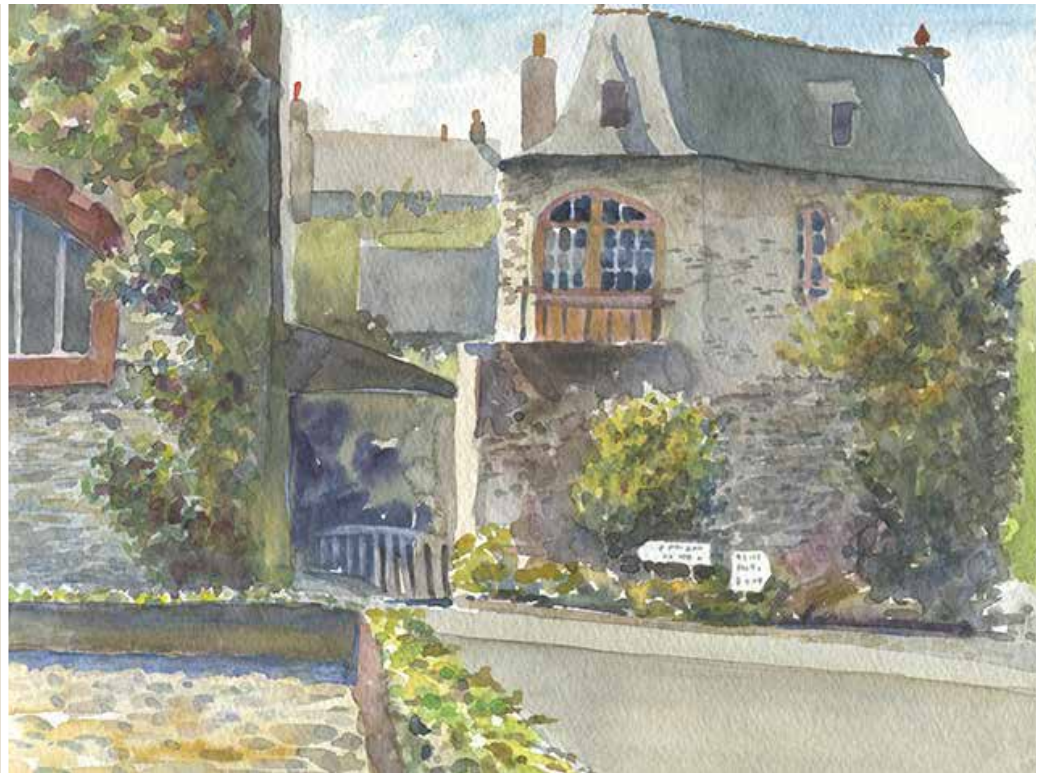
This gracious château overlooking the Loire Valley is a peaceful retreat shaded by 250 year old cedar trees.

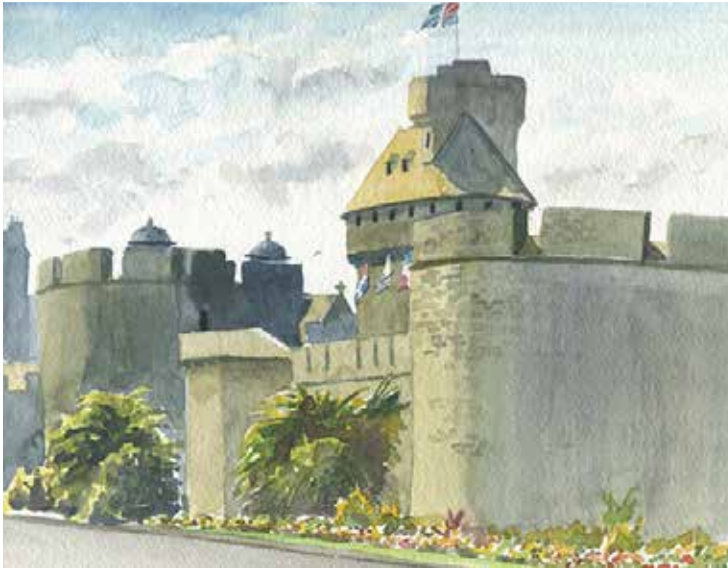




CHATEAU D'ANGERS
Massive walls and hulking towers served defenders well in the middle ages. Used by Germans to store munitions in WWII, it now houses the 320 foot Apocalypse Tapestry.

ROCHFORT EN TERRE
Stone buildings gilded in ivy grace the old fair-grounds, now the Place St. Michel in this tiny medieval village.





ST. MALO

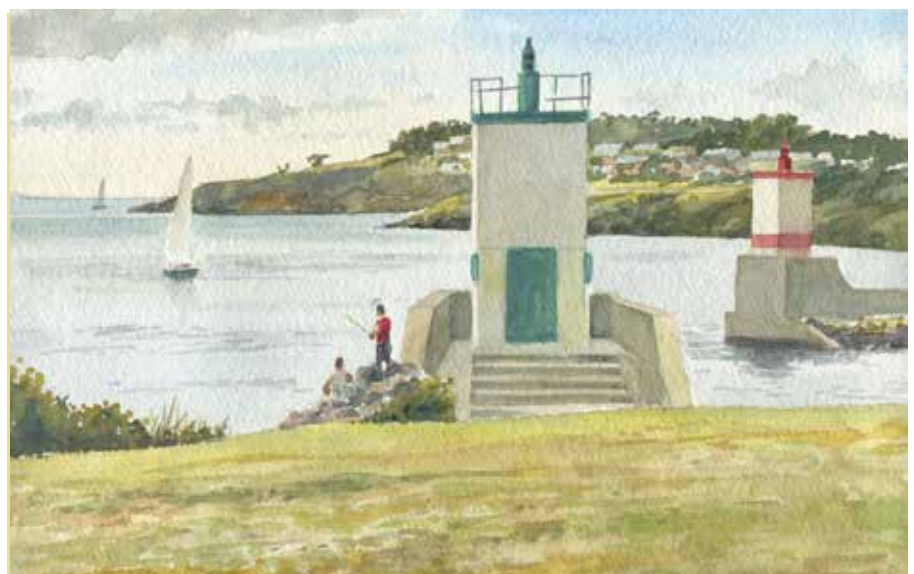
Tidal ebb on Normandy's beaches reveals long, open sandy stretches.

Great for sunning and strolling, but not so great during the D-Day landings. This walled city was a haven for 18th Century corsairs and the scene of fierce fighting in 1944.



PORT DU CROUESTY

The coast of Brittany is dotted with rocky islands and hundreds of vessels navigating them. Sometimes the harbor entrance at Anse du Croesty looks like a commuter station in rush hour as boats abandon the Atlantic and pass between these concrete channel markers.



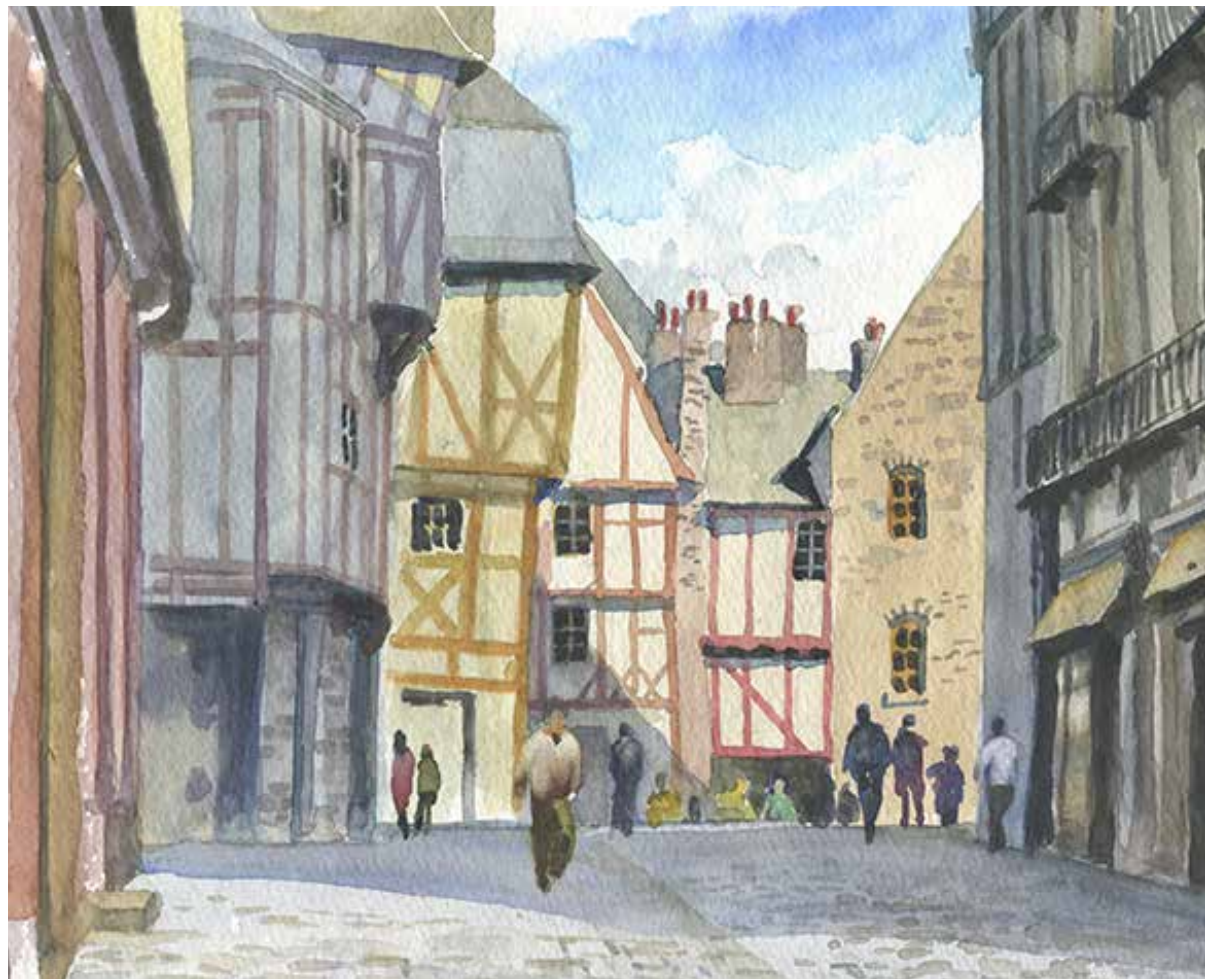


DEAUVILLE

The seaside spot where high rollers roll the dice and movie moguls roll their films is this perfectly manicured and oh so tony burg.

VANNES

At midday a cobblestone street opens onto the Cathedral square. Shadows vanish from huddled half-timbered houses leaning toward the sacred space.

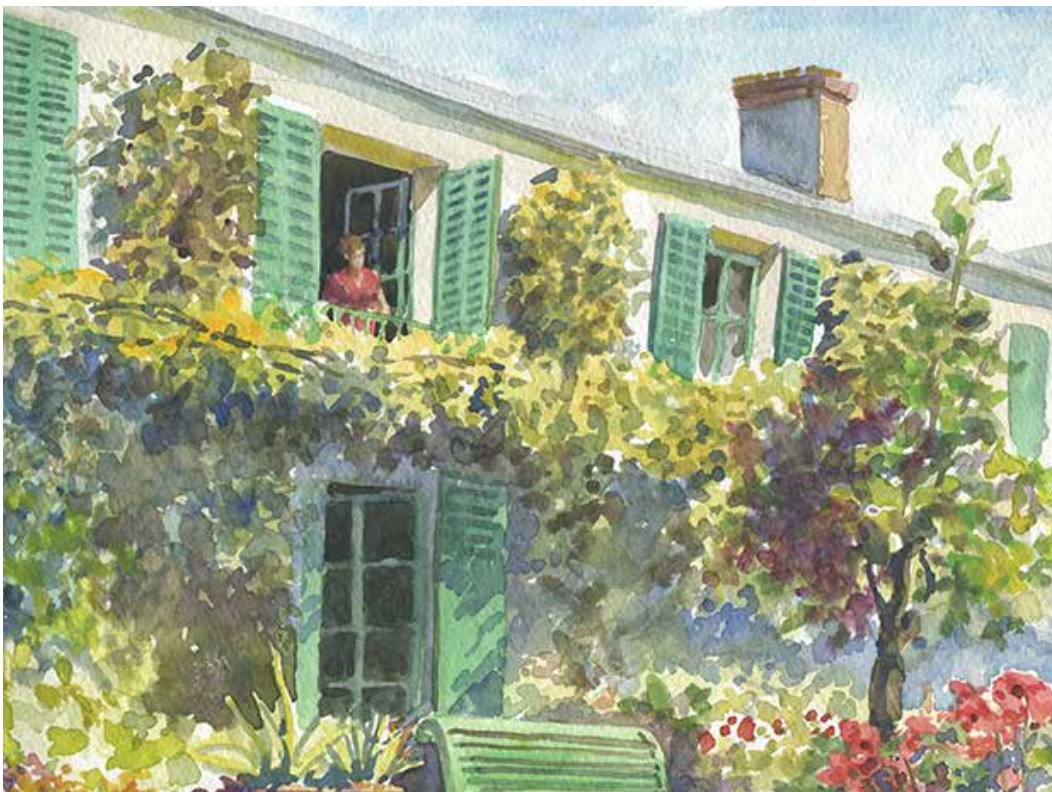




The contents of this layout are copyrighted and may not be reproduced without the written permission of the artist.

SACRE COEUR dominates Montmartre and the north side of Paris.

GIVERNY, the home Monet built for himself, enralls worldwide visitors.



Michael Killelea traveled and painted through the fertile countryside of western France, savoring the wine and the views.

email: art@killeleart.com